



Benwick Close, London, SE16 2HE

Available only for 2 sharers or a family

A spacious and bright three bedroom house in Bermondsey with two gardens, moments from the underground station. The property boasts a generous living room leading into the rear garden, the spacious and modern kitchen, the first bathroom, and the front garden downstairs. Upstairs are the two gentle double double bedrooms, a smaller bedroom / study room, and a stylish family bathroom.

Council Tax Band: D

- Spacious Living Room
- Three Bedroom House
- Two Gardens
- Separate Modern Kitchen
- Two Modern Bathrooms
- Moments from Bermondsey Station

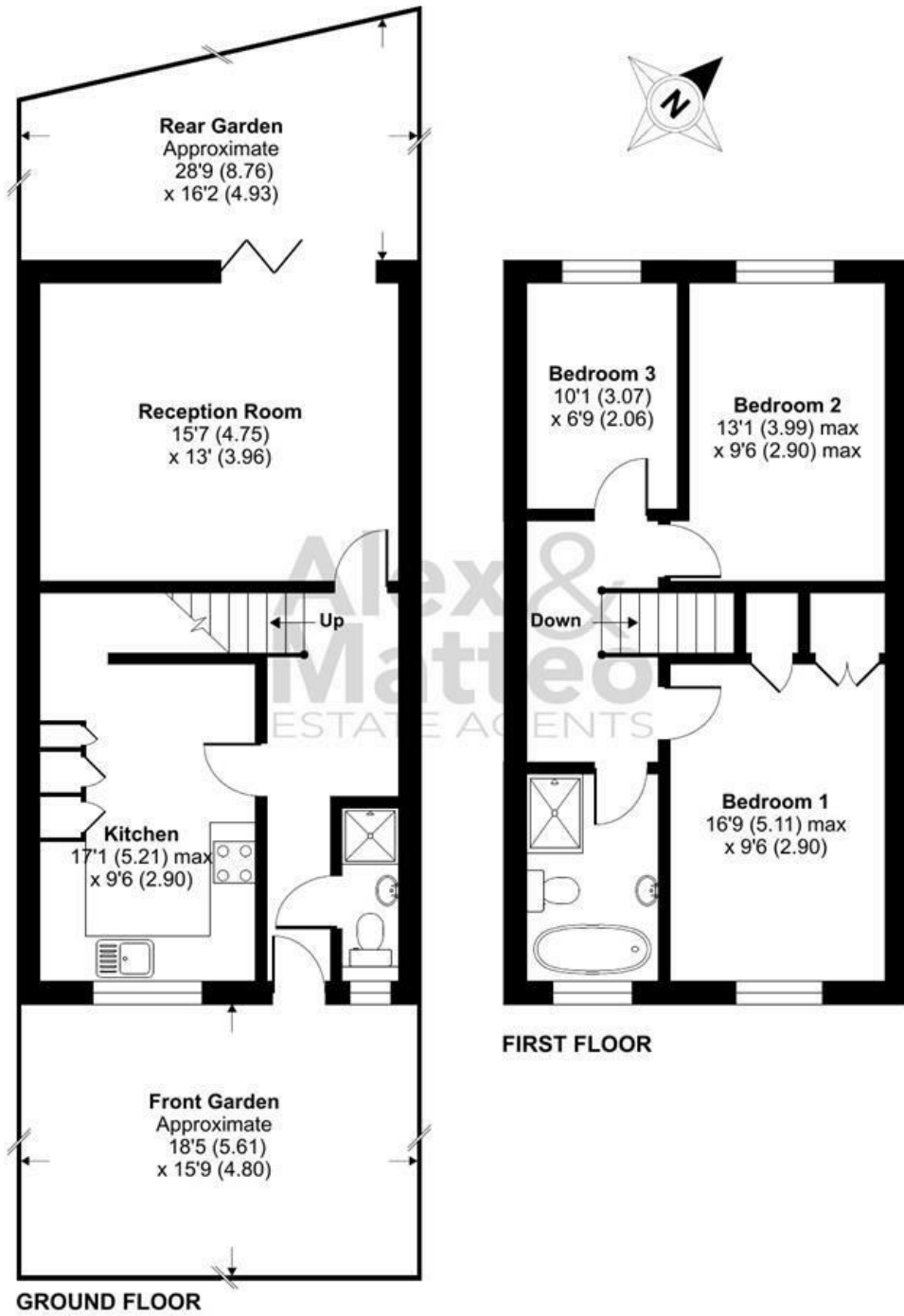
Alex & Matteo
ESTATE AGENTS

£2,500 Per month

Benwick Close, London, SE16

Approximate Area = 976 sq ft / 90.6 sq m

For identification only - Not to scale



Floor plan produced in accordance with RICS Property Measurement Standards incorporating International Property Measurement Standards (IPMS2 Residential). © nichecom 2022. Produced for Alex & Matteo Estate Agents. REF: 880688

Energy Efficiency Rating		Current	Potential
Very energy efficient - lower running costs			
(92 plus) A			
(81-91) B			88
(69-80) C		75	
(55-68) D			
(39-54) E			
(21-38) F			
(1-20) G			
Not energy efficient - higher running costs			
England & Wales		EU Directive 2002/91/EC	